

产品类型特性

1. AC插座 材质

2. 塑胶件 PA66

3. 插销 黄铜镀镍

4. 端子 黄铜镀锡

1. 使用温度范围: $-10^{\circ}\text{C} \pm 70^{\circ}\text{C}$

2. 额定值: 16A 125V 250AC

3. 绝缘电阻: $100\text{M}\Omega$

4. 耐电压: 2500V AC

5. 接触电阻: $30\text{M}\Omega$

6. 寿命: 5000次

结构特性 插拔力: $13.6\text{N} \sim 68\text{N}$

端子强度: 60N

盐雾测试: $35 \pm 2^{\circ}\text{C}$ 24/h

耐环境性能 耐寒性能 $-20 \pm 2^{\circ}\text{C}$ 96/h

耐热性能 $100 \pm 2^{\circ}\text{C}$ 96/h

耐湿性能 $40 \pm 2^{\circ}\text{C}$ 相对湿度90~95% 96/h



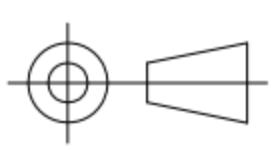
東莞市高迪電子有限公司

DONG GUAN GAO DI ELECTRONICS CO., LTD

TOLERANCE UNLESS OTHERWISE STATED:

Up to 5 ± 0.2
Above 5 ~ 15 ± 0.3
Above 15 ~ 30 ± 0.4
Above 30 ~ 50 ± 0.5
Angle $\pm 0.3^{\circ}$

3RD. ANGEL'S



UNITS

MM

DRAWN BY: DATE

Ming Ming Zou 10/31/13

CHECKED BY: DATE

Ning Ning Su 10/31/13

APPROVED BY: DATE

Jia Xiang 10/31/13

MAT'L

TITLE SWITCH

FINISH

MODLE AC POWER SOCKET

SCALE

1:1

DWG NO. GD-DB-ME-1

SHEET NO.

1 of 1

PART NO.

SIZE

A4

VER

R

ITEM NO. DESCRIPTION DRAWN DATE

A B C D E F G H I J